



multishades

佛山萨内尔五金制品有限公司

Add: No. 5, Building A, Liyuan Metal Logistics, Chencun Town, Shunde District, Foshan, Guangdong, China.

Whatsapp: 86-159-1871-3187

Tel: 86-757-86780865

Email: [info@ctecmetal.com](mailto:info@ctecmetal.com)



# PRODUCT CONTENTS

## 产品目录

- |    |   |       |
|----|---|-------|
| 01 | 不锈钢屏风<br>Stainless steel screen                           | 09/12 |
| 02 | 景观雕塑、金属制品系列<br>Landscape Sculpture. Metal products series | 13/16 |
| 03 | 不锈钢酒柜<br>Stainless steel wine cabinet                     | 17/18 |
| 04 | 楼梯栏杆立柱<br>Stair Railing Post                              | 19/20 |
| 05 | 数控折弯、激光切割<br>CNC bending laser cutting                    | 21/22 |
| 06 | 不锈钢装饰线条<br>Stainless steel mouldings                      | 23/24 |
| 07 | 幕墙、铝单板<br>Curtain wall, aluminum veneer                   | 25/26 |
| 08 | 电梯门套<br>Elevator door cover                               | 27    |
| 09 | 商用门<br>Commercial doors                                   | 28    |
| 10 | 金属装饰网<br>Metal decorative mesh                            | 29/30 |

# COMPANY PROFILE

## 关于我们



## Company Profile

Foshan Multishades Co., Ltd. is a large-scale all-round metal processing center with Swiss 100M super high-power, high-speed laser cutting machine, full CNC cutting, bending and one-stop service.

The company is located in Foshan, the largest stainless steel distribution center in China.

The company has more than 6000 square meters as modern standard factory building It has more than 80 employees, including over 40 middle and senior key technicians. A high-quality professional team has formed a strong production and processing force.

With advanced original imported equipments and exquisite technologies,the company carries out real professional designs for customers'product structure.It provides customers with the most considerate services.



## CORPORATE PHILOSOPHY

### 航尚理念

We are committed to the perfection of every detail.

Build the company into an influential and powerful processing product enterprise in the stainless steel industry.

Due to profession, it' ll be excellent.

Provide customers with perfect technical solutions and excellent after-sales service.

Win reputation with quality. Seek development with technology. Take customer satisfaction as the purpose.

Strengthen competitive awareness and create team spirit.

Only imperfect products, no picky customers

Attitude determines everything, details determine success or failure.

No Perfect, But Better.

More communication and less complaint.

More understanding and less argument.

Efficiency makes the brand and integrity casts the future.

Unity, development, pragmatism and refinement.

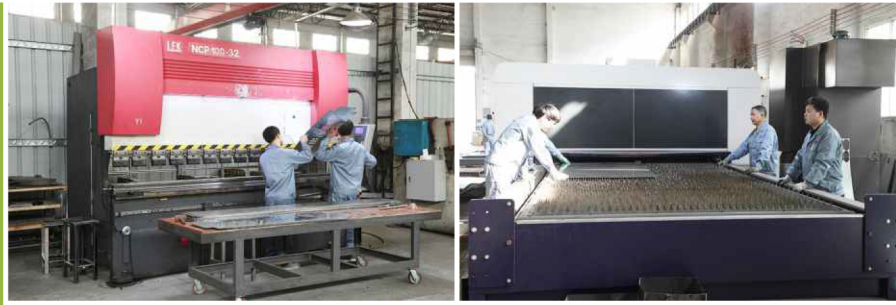
Base on a new starting point and open up a new situation.



# PRODUCTION EQUIPMENT

## 生产设备

German 10000 W Laser Cutting Machine



Cutting Machine (QC12Y,6x6000)

NCP Bending Machine (NCP100-32)



WC67Y Hydraulic Bending Machine (16T/4000)



Professional operators

Adhere to process procedures

Professional formula

CNC Grooving Machine (ghncv-4200)



Welding Machine (WS-200)

加工设备齐全，加精度高，工艺更成熟

*Complete processing equipment, high precision and more mature technology*



Programming  
Drawing  
Design  
Office

The company has a core team engaged in the industry for many years. Senior engineers, graphic designers, programmers and high-quality pre-sales and after-sales service members provide each



Pre-sales,  
After-sales  
Customer  
Service  
Department

customer with product structure analysis, professional and reasonable technical solutions, which can meet the requirements of customers at different levels.



Company  
Team

In order to ensure the quality, each material is tracked and inspected by professional quality inspectors in the production process.

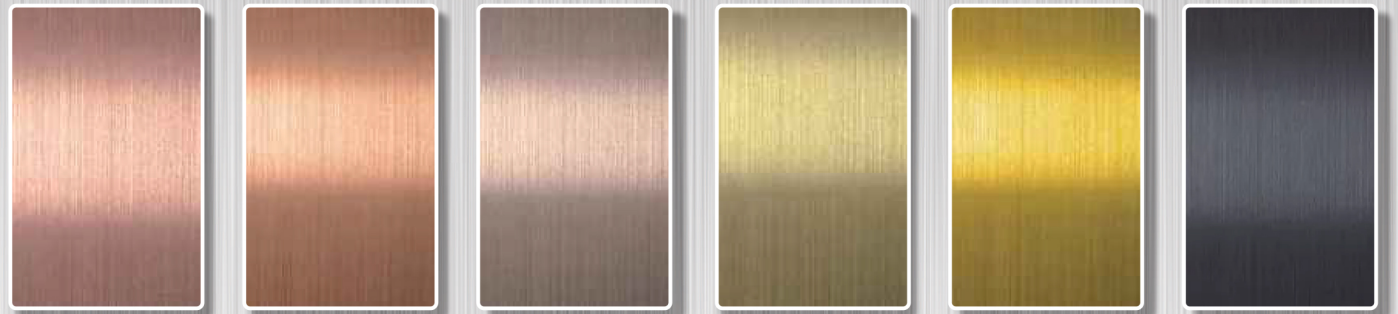


**A CORNER OF THE FACTORY**  
工厂一角

## 不锈钢板系列

Stainless steel plate series

注：本页部分色板展示仅供参考，请以实物为准。  
Note: Some swatches on this page are for reference only, please refer to the actual product.



Wine Red Satin Finish    Rose Gold Satin Finish    Bronze Satin Finish    Champagne Gold Satin Finish    Titanium Satin Finish    Black Titanium Satin Finish



Zirconium Gold Sandblasting    Bronze Sandblasting    Black Titanium Sandblasting    Wine Red Sandblasting    Rose Sandblasting    Titanium Sandblasting

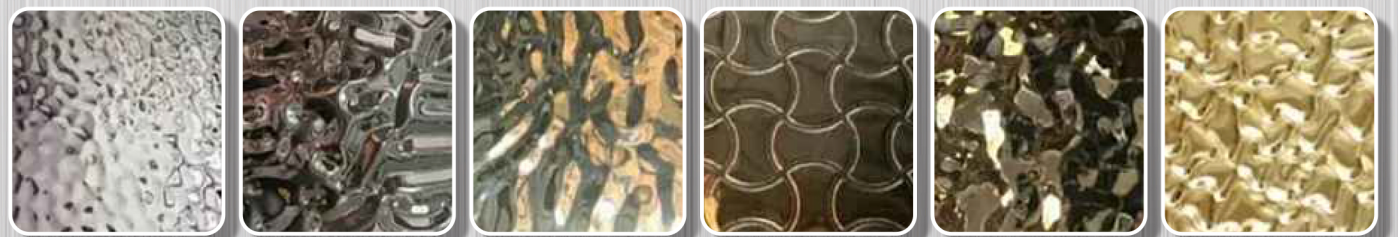


Rose Gold Chaotic Pattern    Wine Red Chaotic Pattern    Champagne Gold Chaotic Pattern    Titanium Chaotic Pattern    Bronze Chaotic Pattern    Natural Color Chaotic Pattern

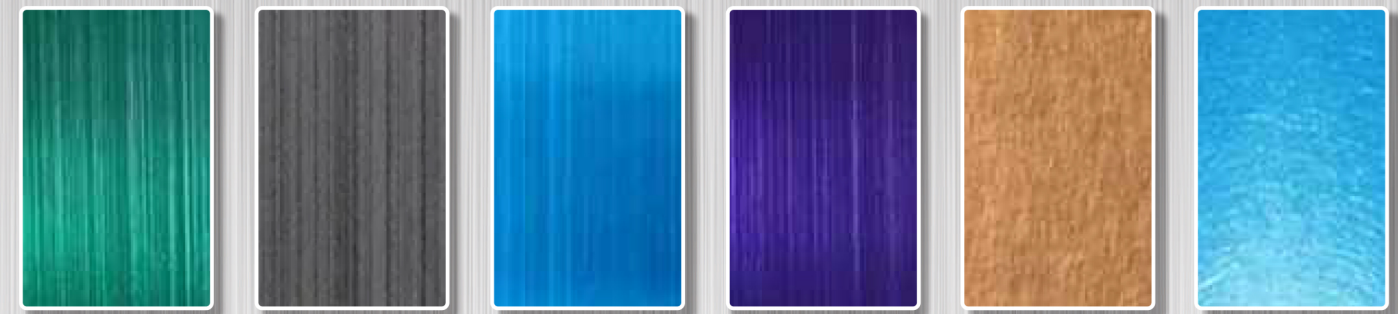
## 不锈钢波纹板

Stainless steel corrugated sheet

注：本页部分色板展示仅供参考，请以实物为准。  
Note: Some swatches on this page are for reference only, please refer to the actual product.



注：本页部分色板展示仅供参考，请以实物为准。  
Note: Some swatches on this page are for reference only, please refer to the actual product.



Emerald Green Satin Finish    Black Titanium Satin Finish    Sapphire Blue Satin Finish    Violet Satin Finish    Rose Gold Chaotic Pattern    Sapphire Blue Chaotic Pattern



Ice Bamboo Plate    Aloe Wood Grain Plate    Square Grid    Mirror Cross Pattern Plate    Cube Plate    Cubic Circular Plate

注：本页部分色板展示仅供参考，请以实物为准。  
Note: Some swatches on this page are for reference only, please refer to the actual product.

## 不锈钢板系列

Stainless steel plate series

## 不锈钢蚀刻板

Stainless steel etching plate

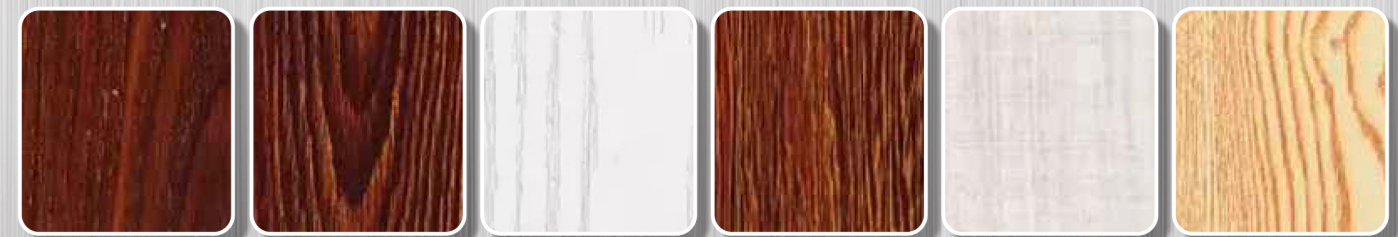


Titanium Etching    Water Etching    Champagne Gold Etching    Bronze Etching    Mirror Etching    Coffee Gold Etching

注：本页部分色板展示仅供参考，请以实物为准。  
Note: Some swatches on this page are for reference only, please refer to the actual product.

## 不锈钢木纹板

Stainless steel wood grain board



# Stainless Steel Screen

## 不锈钢屏风

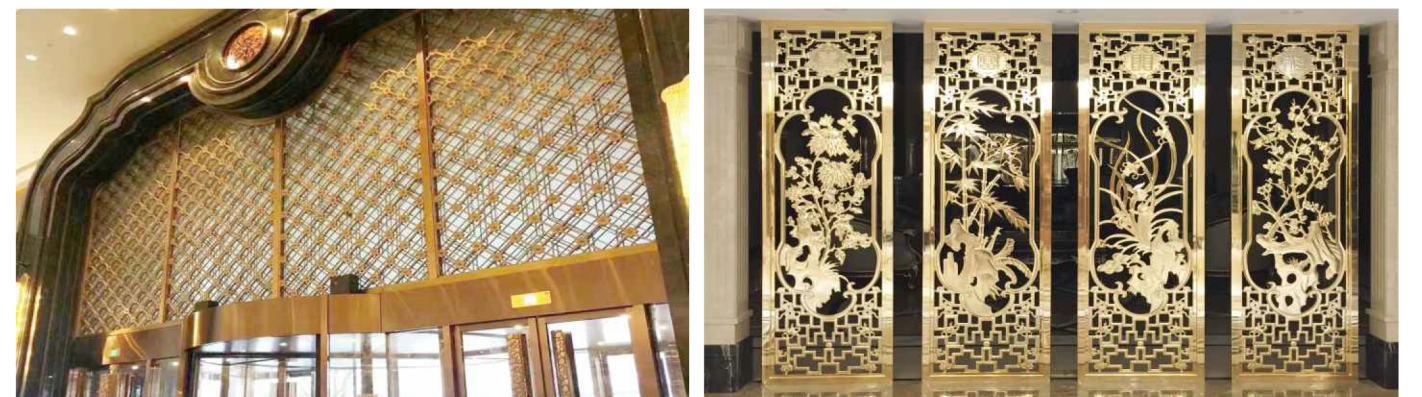
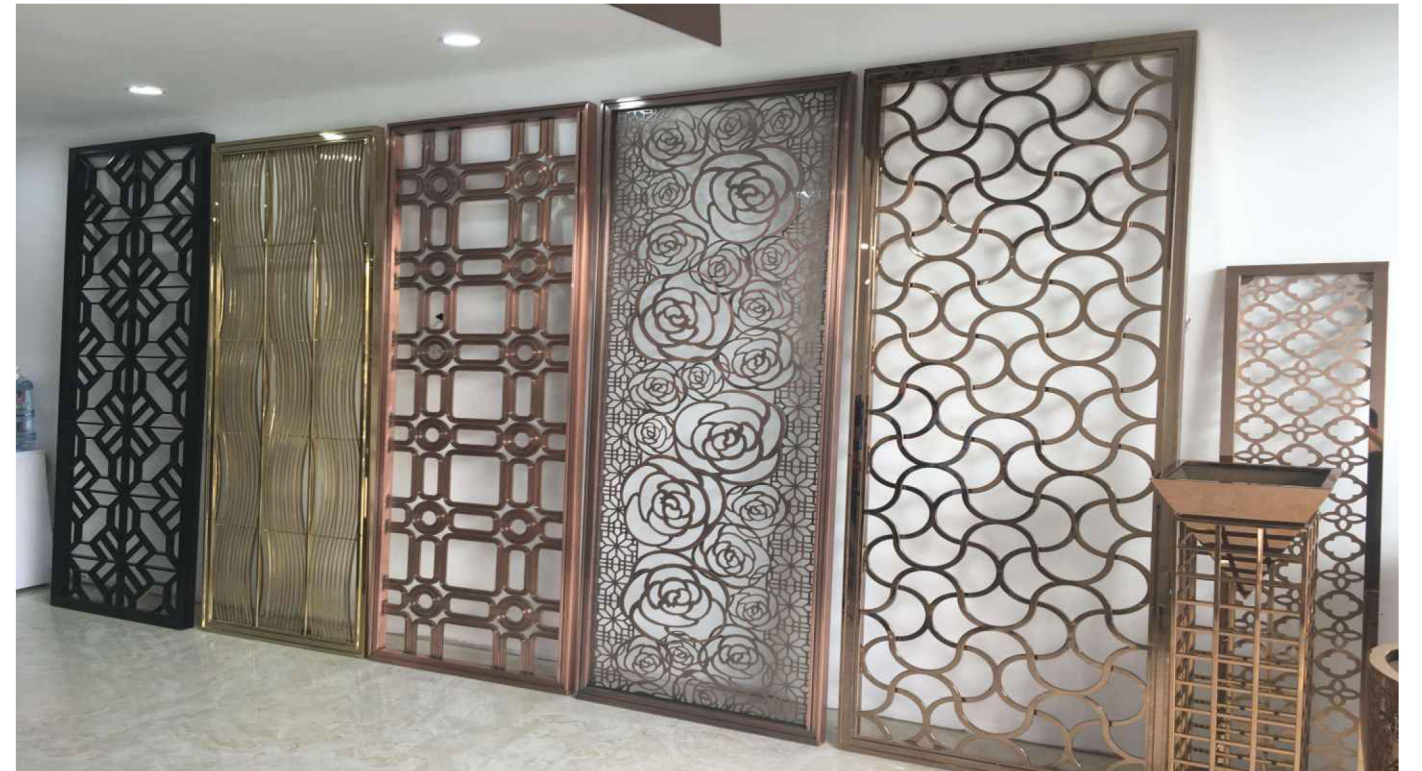
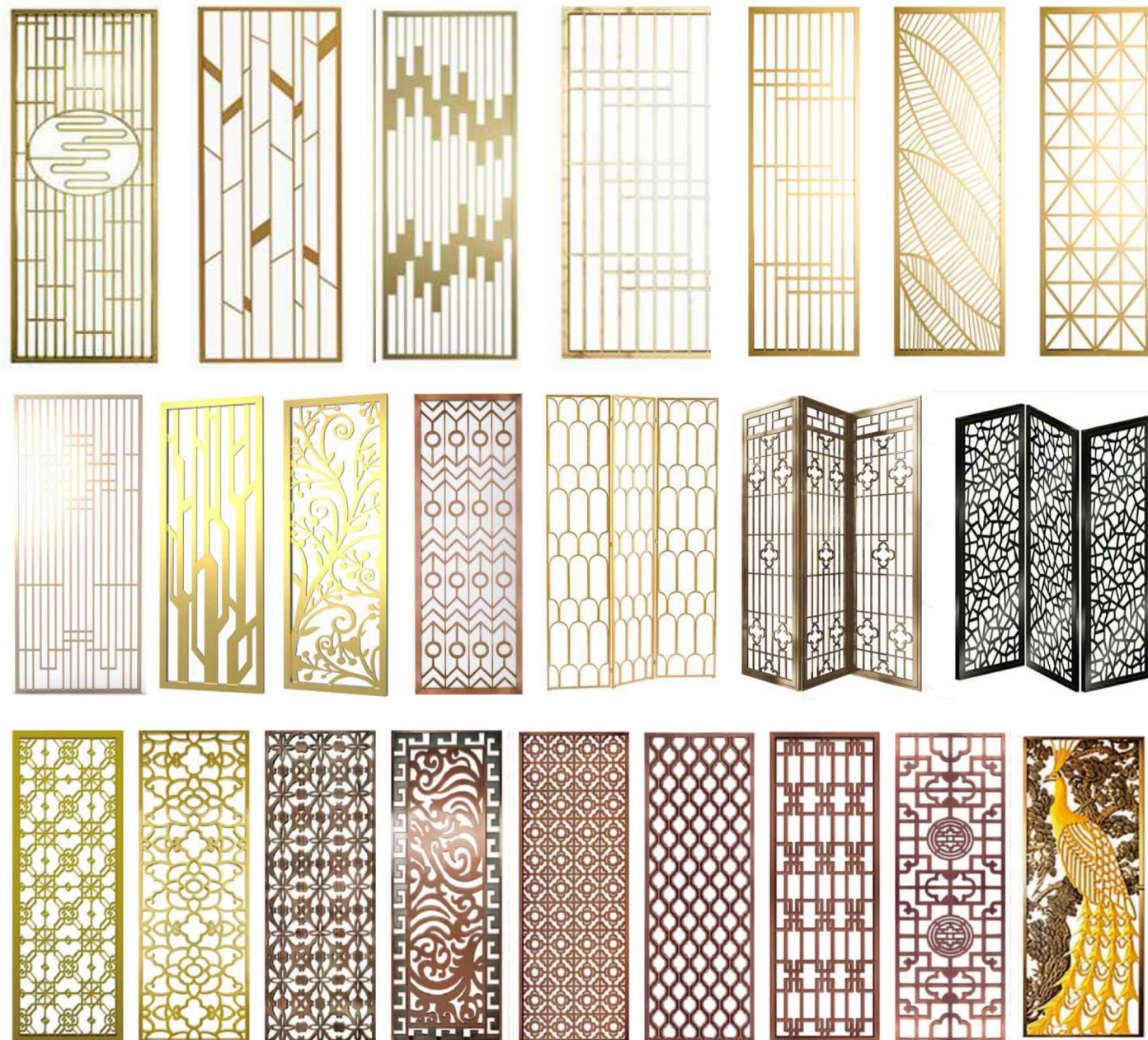
### 01

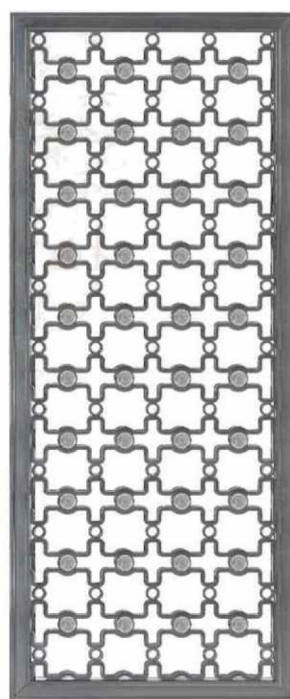
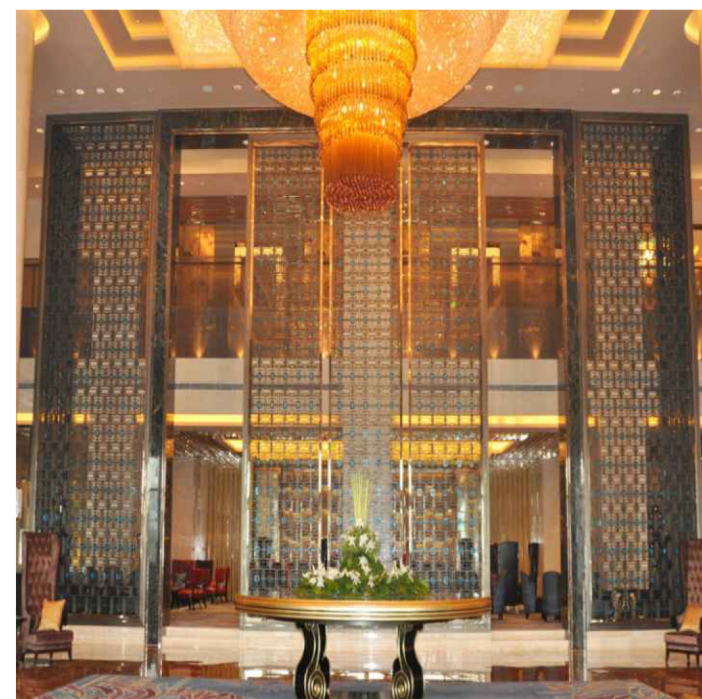
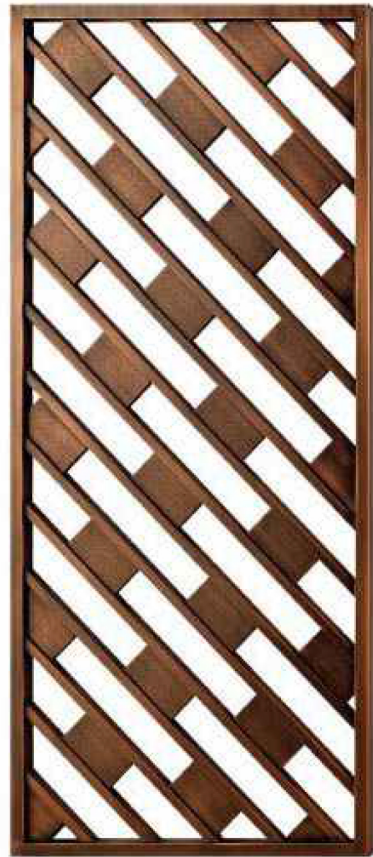
#### Product Introduction:

As an interior furnishing, screen occupies an important position in modern interior design. Screen can create a new form of indoor combination, and reshape the internal space of the building through the organization and limitation of space. Stainless steel screen uses stainless steel pipe welding or stainless steel plate laser cutting to produce various styles of patterns. It has the characteristics of waterproof, moisture resistance, wear resistance and oxidation resistance, so it is popular.

#### Scope of Application:

It is widely used in real estate development companies, decoration companies, construction engineering, advertising companies, design companies, hotels, office buildings, shopping malls, modern large hotels, restaurants, gymnasiums, office buildings, private villas, etc.





# Landscape Sculpture

## 景观雕塑

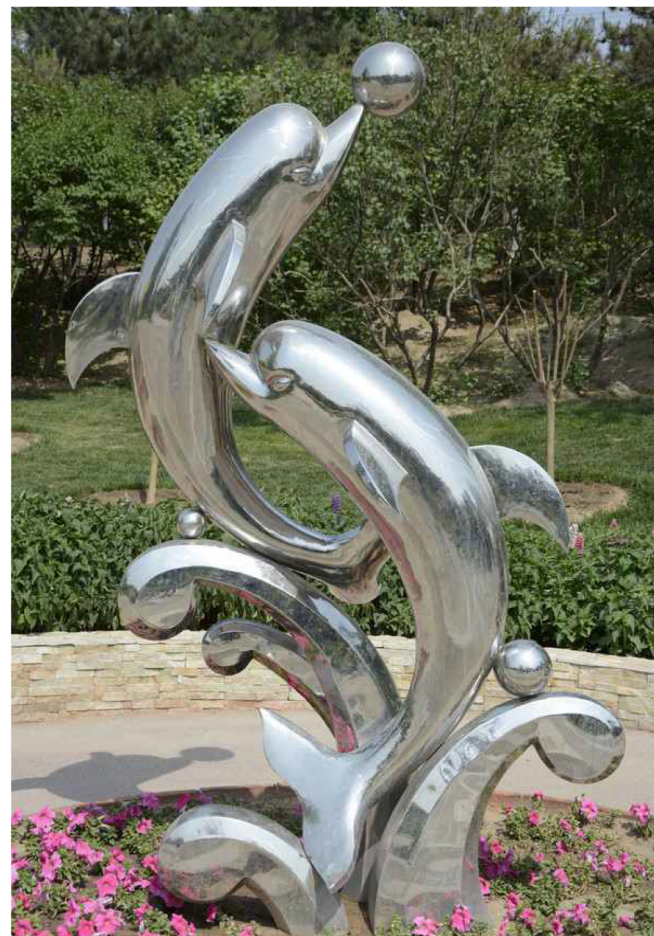
### 02

#### Product Introduction:

Landscape sculpture is a kind of sculpture art. It is mainly used in outdoor landscape places, such as garden landscape or urban landscape. Landscape sculpture is different from ornament sculpture, mainly because of its relatively large shape. Its aesthetic requirements are more inclined to public aesthetics. In terms of materials, it has stronger requirements for weather and ultraviolet protection, mainly including copper, stainless steel, FRP resin, natural stone, etc.

#### Scope of Application:

It is widely used in garden scenic spots, parks, streets government agencies, squares, etc.







# Stainless steel wine cabinet

## 不锈钢酒柜

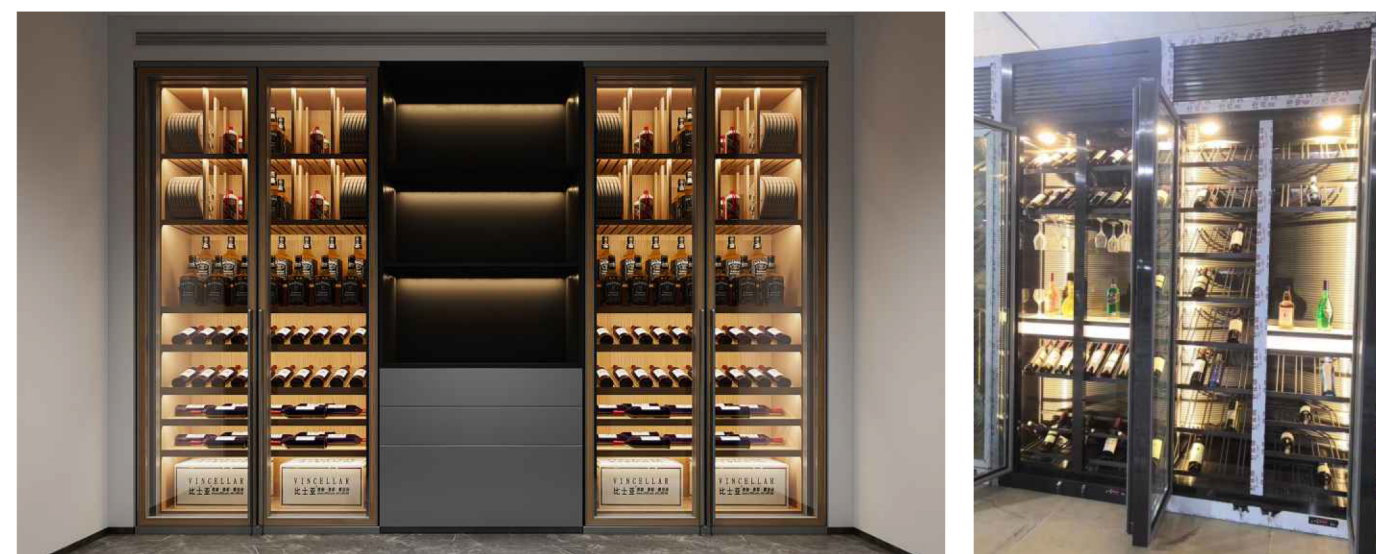
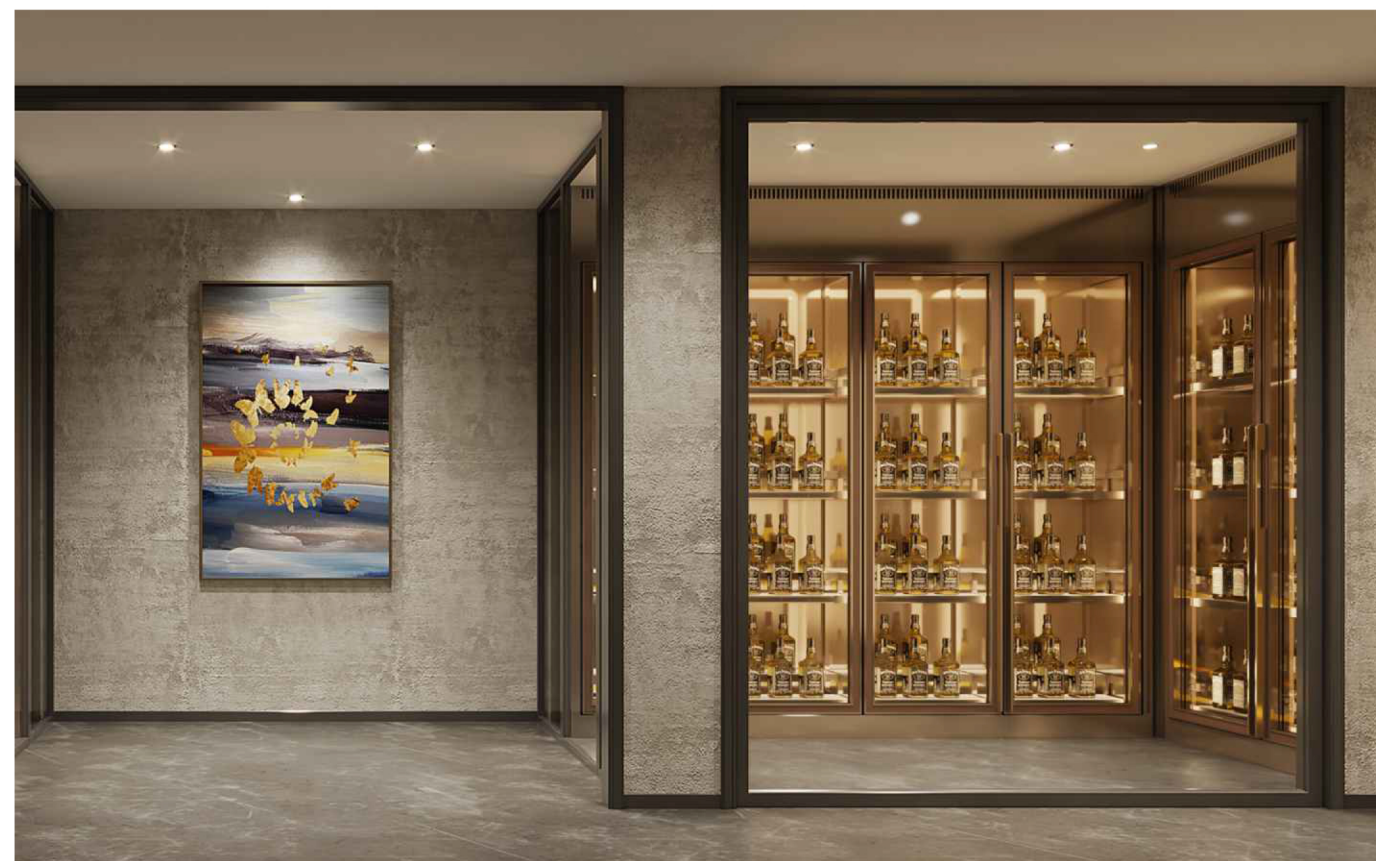
03

### Product Introduction:

With a strong sense of the times and a more modern style, the stainless steel wine cabinet looks simple and generous. Meanwhile, it also has the characteristics of beautiful appearance, firm structure, free assembly, fast disassembly and convenient transportation, and the display rack has beautiful style, noble and elegant, good decorative effect and durability. It is more and more popular with many wine merchants and is more and more widely used.

### Scope of Application:

It is widely used in star hotels, wine cities, restaurants, interior decoration, golf halls, private clubs, enterprises and institutions.



# Stair Railing Post

## 楼梯栏杆立柱

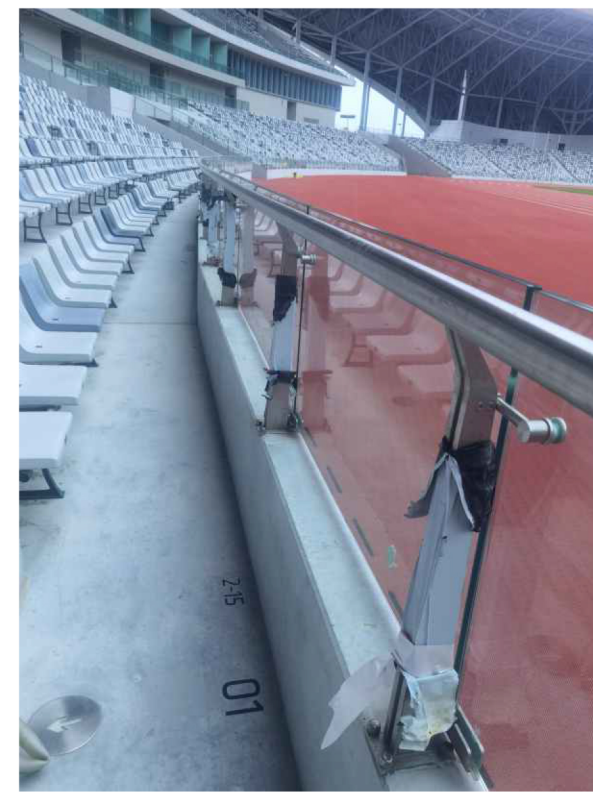
### 04

#### Product Introduction:

Stainless steel stair handrail is made of stainless steel. It is mainly divided into handrails, columns, bases and other components. It has a very modern appearance and is easy to clean. The most important thing is that it is not rusty and has a long service life. The common stainless steel stair column material in the market is stainless steel 304. 316 material is widely used in coastal areas, which is corrosion resistant and so on.

#### Scope of Application:

It is widely used in construction engineering, family stairs, companies, parks, squares, shopping malls, etc.



# CNC bending laser cutting

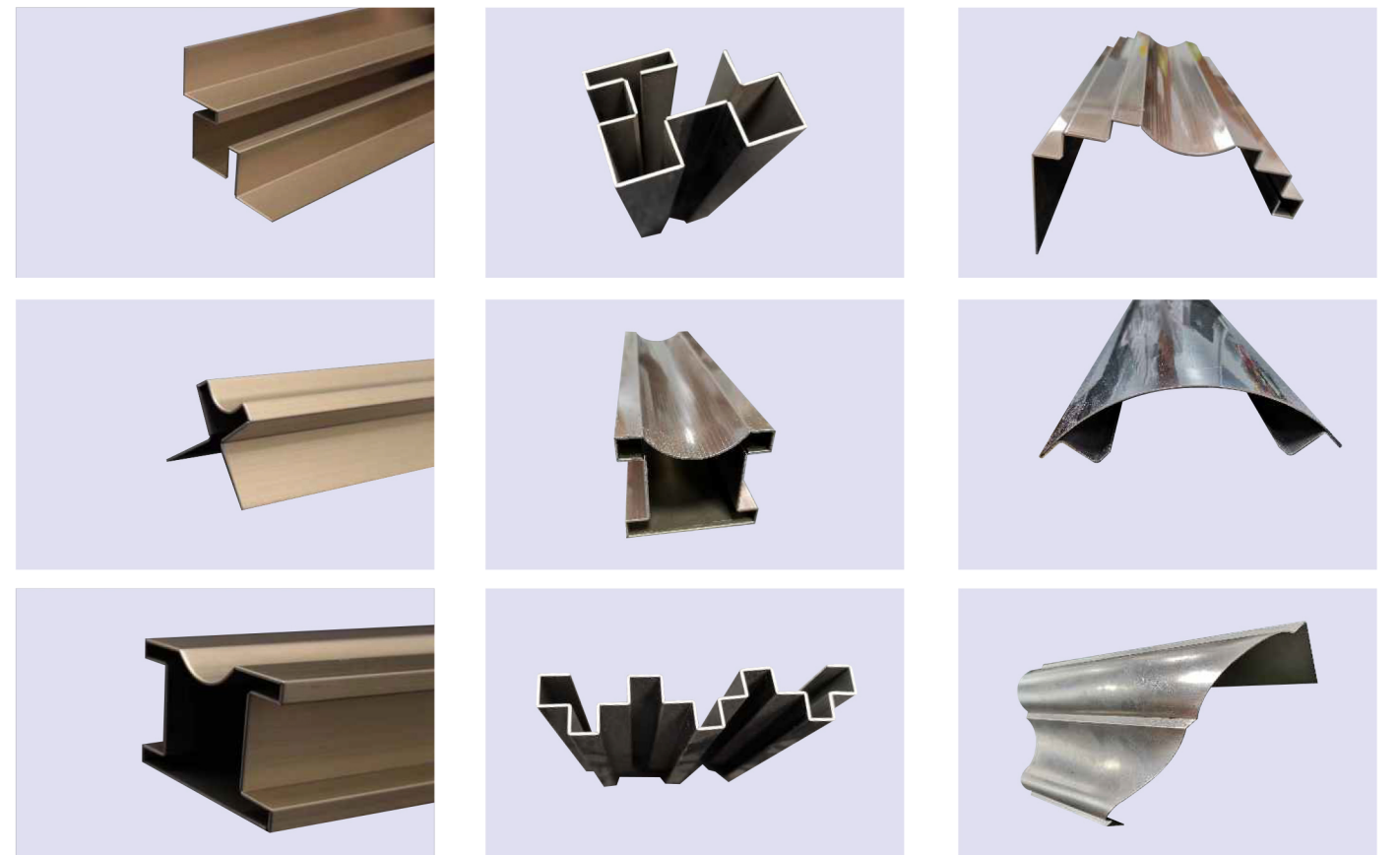
## 数控折弯 激光切割

### 05



It is mainly used for fast laser cutting and processing of various metal materials, such as carbon steel, silicon steel, stainless steel, aluminum alloy, titanium alloy, galvanized plate, pickling plate, aluminum zinc plate, copper and so on. Laser cutting technology repairs high value-added parts and equipment at a lower price. Adding protective coating to the original parts can greatly prolong the active life. It is a new manufacturing method with green environmental protection and guaranteed quality. Numerical control bending machine is a kind of workpiece that uses models with strips in the drawing to turn the cold metal plate into various geometric street shapes. It is a plate forming machine designed for cold sheet metal processing. It is widely used in plate bending processing in automobile, aircraft manufacturing, light industry, shipbuilding, container, elevator, railway vehicle and other industries.

Can be customized with drawings and samples



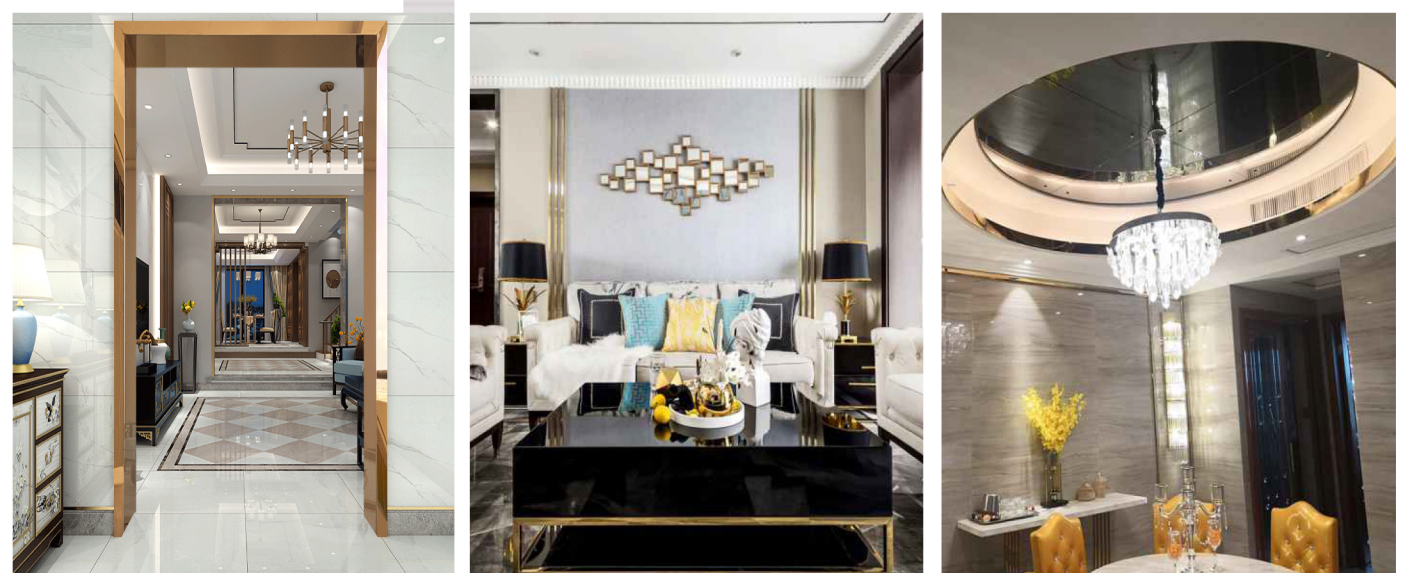
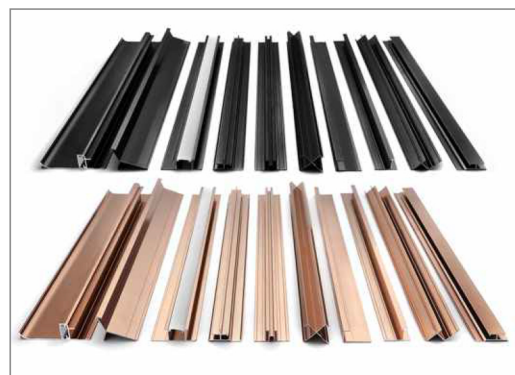
# Stainless steel mouldings

## 不锈钢装饰线条

06

### Product Introduction:

Stainless steel decorative lines show the elegant and luxurious high-grade quality of decoration with simplicity. Stainless steel is not only silver white. Its colors are rich, like black titanium, titanium gold, champagne gold, rose gold, Tan, bronze and so on. The color surface layer will not fade for a long time. And the color will change with different illumination angles. Stainless steel lines are embedded in the wall with changeable shapes. It breaks the monotony and dullness of the whole plain wall, mixes exquisite and advanced and shows the charm of the whole space with flexible curves. Stainless steel line is a stainless steel decorative line, which is scratch resistant, fadeless, waterproof and anti-corrosion. The size can be customized, environmentally friendly, easy to clean, beautiful and without leaving marks.



# Curtain wall aluminum veneer

## 幕墙、铝单板

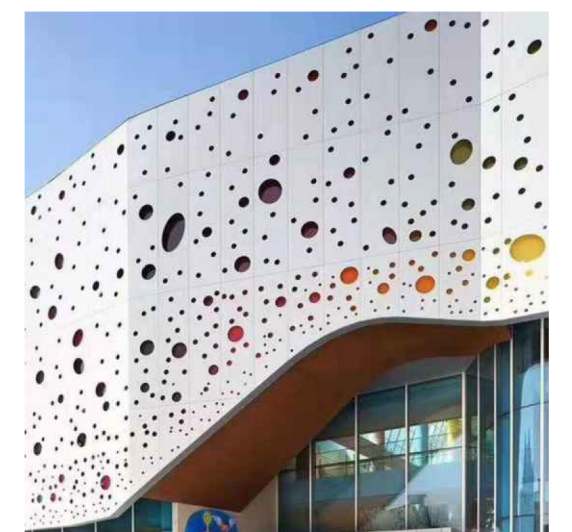
### 07

#### Product Introduction:

As a form of curtain wall, aluminum veneer curtain wall is mostly used as wall shielding and non daylighting wall to replace mosaic and general sand blasting exterior wall. Based on its unique advantages, aluminum veneer curtain wall can be widely used. Aluminum veneer curtain wall is a new curtain wall material which uses high-quality aluminum alloy plate as the base material and is formed by numerical control bending and other technologies. The surface is sprayed with decorative paint. It processes before painting.

The aluminum plate can be processed into various complex geometric shapes such as plane, arc and spherical surface. It is not easy to stain but easy to clean and maintain.

The non adhesion of fluorine coating film makes it difficult to attach pollutants to the surface with a better cleanliness.



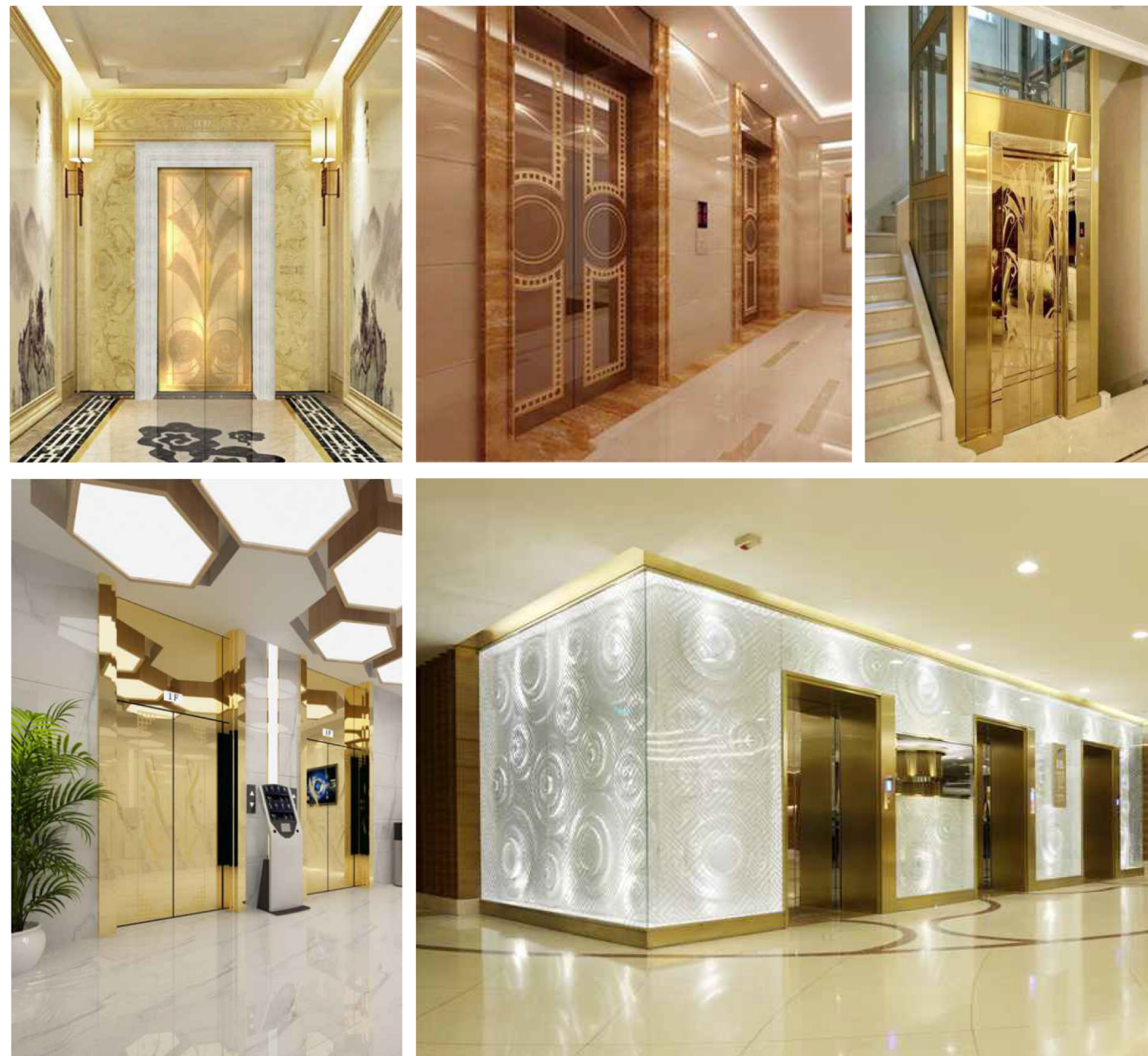
Stair Railing  
Post  
电梯门套  
08

**Product Introduction:**

As an indispensable necessity of modern society, elevator has appeared more and more in every corner of life. Elevator door pocket is divided into small door pocket and outsourcing door pocket. It is made of hairline stainless steel. The door cover is used to cover the wall between the small door cover and the elevator call key. It is the most important part of the waiting hall. It has indicative and decorative functions, so that people can more intuitively find the location of the elevator entrance and exit.

**Scope of Application:**

It is widely used in stainless steel elevator plate installation industry, such as star hotels, shopping malls, office buildings and exhibition halls.



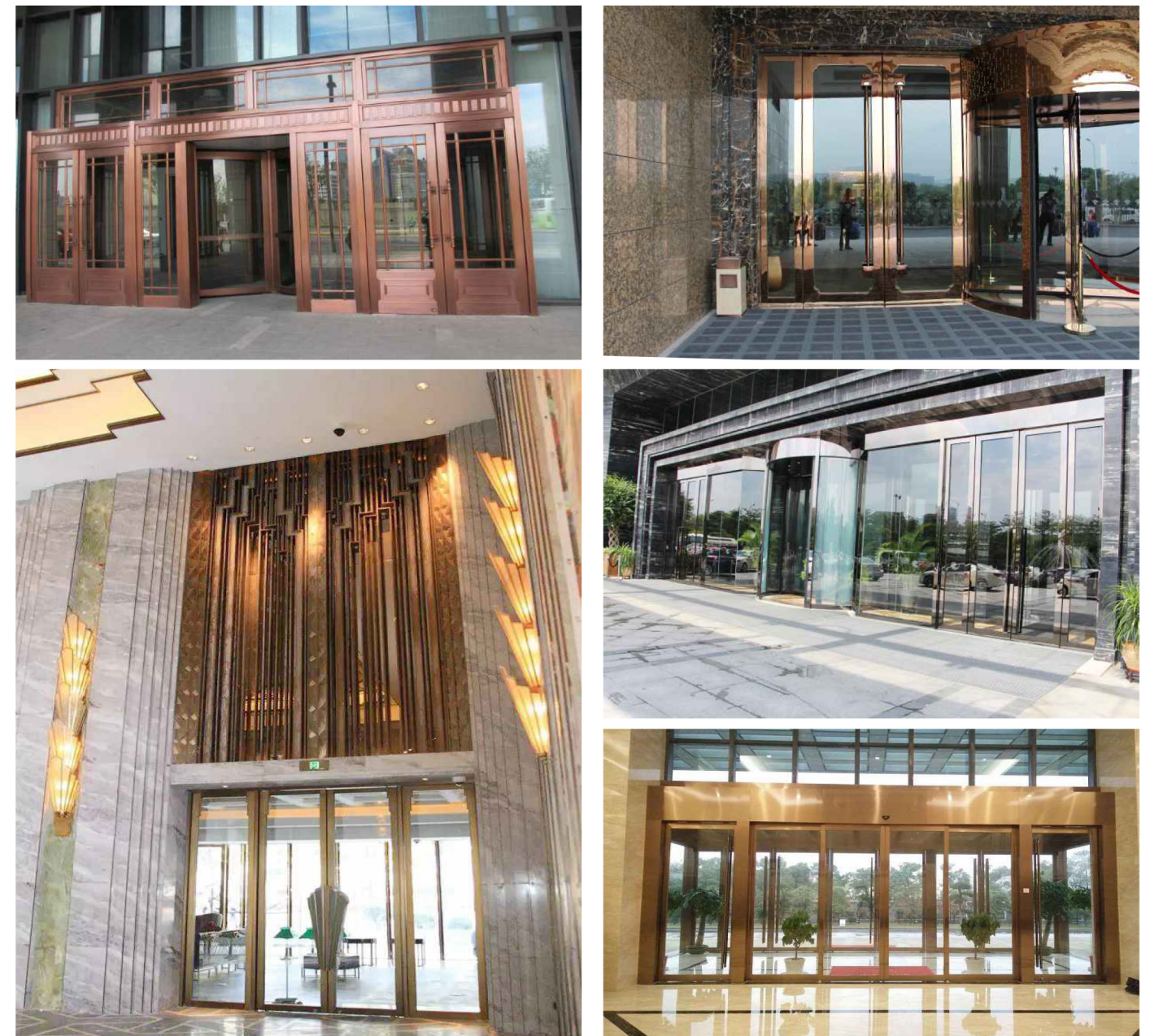
Commercial  
door  
商用门  
09

**Product Introduction:**

The products are beautiful, durable, colorful, easy to use, open freely, noise reduction and sound insulation, acid and alkali resistance, corrosion resistance and have other chemical stability. They are easy to clean, simple and has fast installation, long service life and convenient maintenance.

**Scope of Application:**

It is widely used in star hotels, shopping malls, office buildings, exhibition halls, restaurants and other places.



# Stair Railing Post

## 金属装饰网

### 10

#### Product Introduction:

Metal decorative net is a new type of building decoration material. It is made of high-quality stainless steel, aluminum alloy and other alloy materials through special process. It is endowed with a refraction effect that the traditional cloth curtain does not have. It is endowed with the characteristics of dynamic fashion and metal texture. It also gives your room a sense of elegance, extraordinary temperament, personality and noble taste.

#### Scope of Application:

It is widely used in the facade, partition, ceiling and high-grade internal and external decoration of museums, exhibition halls, cultural centers, high-grade hotels, restaurants, opera houses, office buildings, villas and other buildings.

